

PRORIL

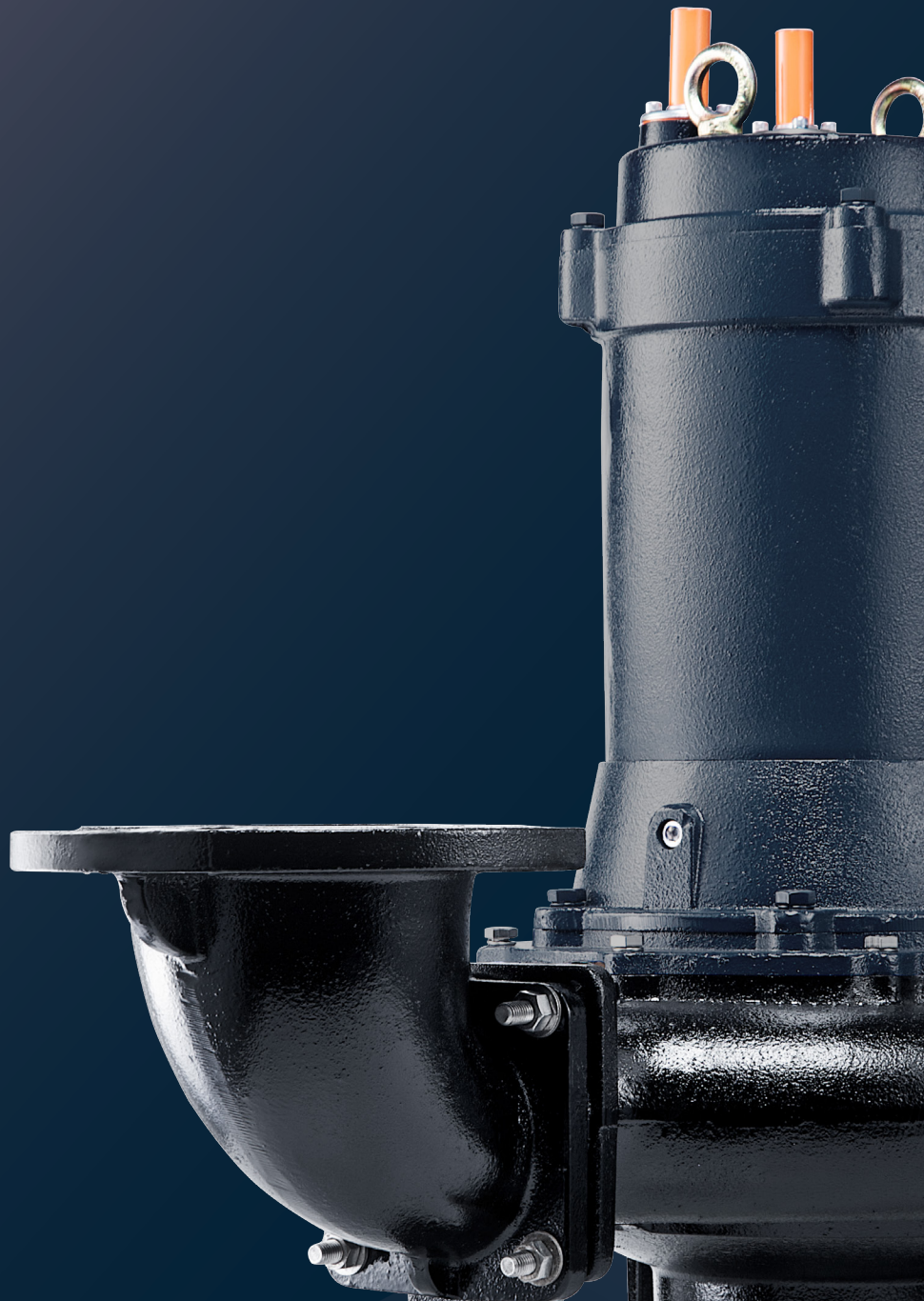
60Hz

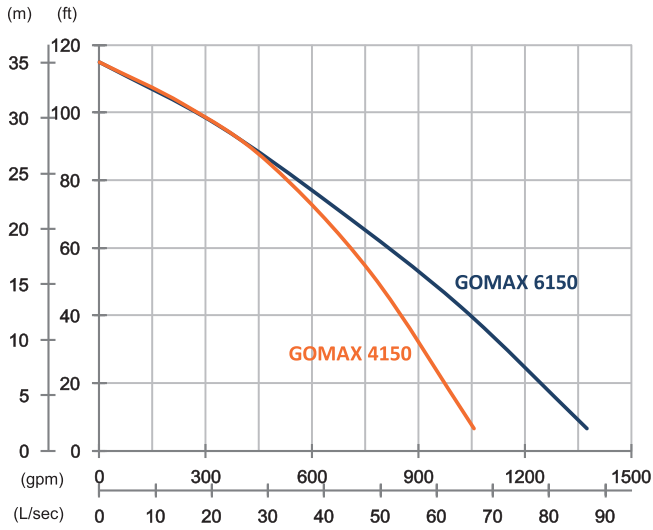
GOMAX Series, these non-clog pumps employ a single-channel enclosed impeller to efficiently and reliably transfer 76mm diameter solids without clogging. GOMAX series pumps are suitable for commercial and industrial wastewater applications.

Sewage Pump

GOMAX 4150/6150

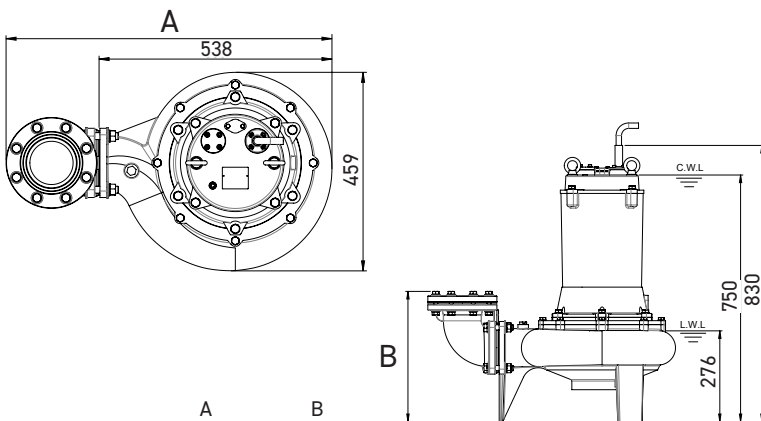
Single Channel Pump





	GOMAX 4150	GOMAX 6150
OUTPUT	20 HP (15 kW)	20 HP (15 kW)
OUTLET	4" (100 mm)	6" (150 mm)
SOLID PASSAGE	3" (76 mm)	3" (76 mm)
Weight	392 lbs/178 kg	410 lbs/186 kg
HEAD	Rated: 85 ft, 26 m Max: 115 ft, 35 m	Rated: 72 ft, 22 m Max: 115 ft, 35 m
FLOW	Rated: 475 gpm, 30 L/s Max: 1056 gpm, 66.6 L/s	Rated: 660 gpm, 41.6 L/s Max: 1373 gpm, 86.6 L/s

Pump Type		Electric Submersible Pumps
Motor	Phase	3-Phase
	Type	Induction Motor
	Poles	4 Pole (1750 rpm)
	Insulation	Class F
	Protector	Star-Delta · Miniature Thermal Sensors D.O.L. · Circle Thermal Protector
	Starter	Star-Delta, D.O.L.
Lubricant		Food Grade (ISO VG32)
Specs.	Impeller Type	Single Channel
	Shaft Seal	Double Mechanical Seal Silicon Carbide VS Ceramic/Carbon
	Bearings	C3 Shielded ball bearings
	Cable	CSA-Certified PVC Jacketed Cables 33 ft (10 m) or longer upon request
Materials	Pump Casing	Gray Iron
	Impeller	Gray Iron
	Motor Frame	Gray Iron
	Motor Shaft	Stainless Steel
	Mouth Ring	Copper Alloy
Max. Liquid Temperature		40°C (104°F)
Max. Submersion Depth		20 m (66 ft)
pH Range		pH 5 - pH 8
Guide Rail		GRN-04



	A	B
GOMAX 4150	753	379
GOMAX 6150	813	452

unit : mm
C.W.L : Continuous running water level
L.W.L : Lowest running water level